



**INNOVATIVE  
COMPONENTS, INC.**

*for Innovative Solutions*

# PRESS-ON THUMB SCREWS

Press-On thumb knobs can be pressed onto a socket head cap screw thereby conveniently creating an instant thumbscrew. This unique and efficient design fastens the cap screw to the knob head for a secure snug fit without any need for glue or adhesive. Knobs can be purchased with or without the cap screw assembled onto the knob head.

Press-On thumb screws come in a variety of knob diameters as well as knob styles including knurled, T, 3-Lobe, and rosette.

Thumbscrews can be purchased from stock in a standard black but colors are available upon request. Stock colors include red, yellow, grey, and natural/white. Minimums may apply on non-stock colors. All press-on knobs are made of Acetal.

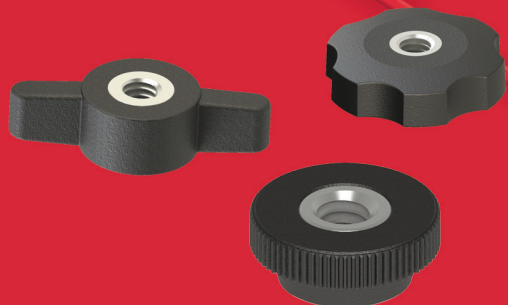
Stock knob heads can accept #4, #6, #8, #10, 1/4, 5/16, 3/8, as well as their metric equivalents in M3, M4, M5, M6 & M8.

Knurled

Rosette

T-Knobs

3-Lobe



Also available in a female threaded version.