



**INNOVATIVE
COMPONENTS, INC.**

for Innovative Solutions

THREAD DETECTIVE®

The Thread Detective is a precise and easy-to-use thread identifier for both nuts and bolts, consisting of gliding ROHS Steel identifiers strung on a wire lanyard. It is especially well suited for distinguishing between similar inch and metric threads. Permanent, easy to read size markings are laser etched into each stand off. Shatterproof, color coded polypropylene gauge dividers allow recognition between inch and metric strands at a glance.

Miniature Combination Unit

Inch identifiers consist of nut and bolt sizes of 1-64, 1-72, 2-56, 2-64, 3-48, 3-56, 4-40, 4-48, 5-40.

Metric identifiers consist of nut and bolt sizes of M1.2x0.25, M1.6x0.35, M1.6x0.20, M1.8x0.35, M2x0.40, M2x0.25, M2.5x0.45, M2.5x0.35, M3x0.35, M3x0.50, M3.5x0.60, M3.5x0.35.

Standard Combination Unit

Inch identifiers consist of nut and bolt sizes of 6-32, 8-32, 10-24, 10-32, 1/4-20, 1/4-28, 5/16-18, 5/16-24, 3/8-16, 3/8-24, 7/16-14, 7/16-20, 1/2-13, 1/2-20.

Metric identifiers consist of nut and bolt sizes of M4x0.7, M5x0.8, M6x1.0, M8x1.0, M8x1.25, M10x1.0, M10x1.25, M10x1.5, M12x1.25, M12x1.5, M12x1.75.

Large Combination Unit

Inch identifiers consist of nut and bolt sizes of 5/8-11, 5/8-18, 3/4-10, 3/4-16, 1-8, 1-12.

Metric identifiers consist of nut and bolt sizes of M14x1.5, M14x2.0, M16x1.5, M16x2.0, M20x1.5, M20x2.5, M24x2.0, M24x3.0.

Lug Unit

Inch identifiers consist of nut and bolt sizes of 7/16-20, 1/2-20, 9/16-18.

Metric identifiers consist of nut and bolt sizes of M12x1.25, M12x1.5, M12x1.75, M14x1.5, M14x2.0.

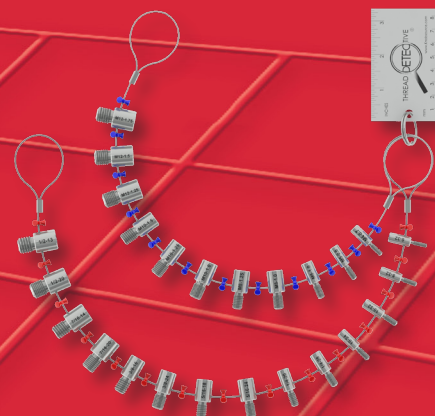
Our Thread Detectives® are equipped with a 3-3/8" (85mm) ruler for measuring stud lengths. The ruler can be printed with your company or customer's information for promotional use.

For your convenience, we provide extra long wire rope for those hard to reach places, as well as loops on each end for convenient hanging.

Thread Detective is a registered trademark of Innovative Components, Inc.



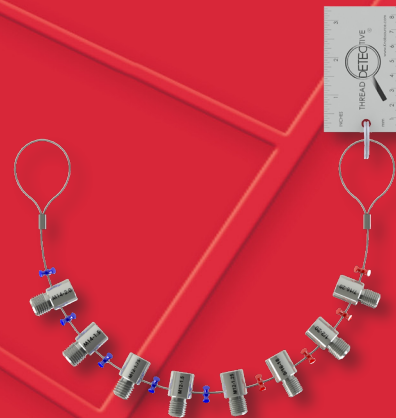
Miniature Combination Unit



Standard Combination Unit



Jumbo Combination Unit



Lug Unit